

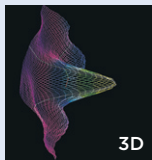
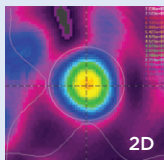
SureLase™

Advanced PureBeam technology for superior performance at an outstanding value

SURELASE™ TECHNICAL SPECIFICATIONS

Laser Type:	CO ₂ , 10.6 μm, RF-Excited Metal Resonator
Power Output:	30 Watt Maximum, 20 Watts to Tissue
Delivery System:	Titanium Clad Fiber Cable, 2.00m and 2.75m
Fiber Characteristics:	Transmission Efficiency < 73%, No Cooling Required
Beam Characteristics:	TEM ₀₀ , Gaussian
Operating Modes:	CW, Pulsed and SuperPulsed
Operator Panel:	Touch Screen incl. Video Display of Procedures
Aiming Beam:	Diode Laser 532 nm, green, 5 mW, variable intensity, for use with Scanner and Micromanipulator
Purge Gas:	Emits from Disposable Probes and Fibers
Power Supply:	110 - 230 V / 50 - 60Hz / 10A
Dimensions:	WDH 38 X 38 X 101 cm - 15" X 15" X 40"
Weight:	21 kg - 47 lbs
Accessories:	Universal HandPiece, Malleable Probes, Flexible Fibers, Scanner, and Micromanipulator
Fields Of Use:	Neurosurgery, Spine-, ENT-, Head & Neck- and Cosmetic Surgery, General and Robotic Surgery, Laparoscopy, Urology and Gynecology
Warranty	Two Years on Parts and Labor

Laser Fiber Energy Distribution Profiles



PureBeam's Gaussian energy distribution profile creates a smaller, more intense central spot diameter and provides a longer working distance range for clear visualization



Specifications subject to change without notice.

**FOR MORE INFORMATION OR TO PLACE AN ORDER CONTACT
1-800-CLINICON OR VISIT OUR WEBSITE AT WWW.CLINICON.COM**



Clinicon Corporation USA
3025-A Industry Street
Oceanside, CA 92054
T 800-CLINICON
T 760-439-1700
F 760-439-1798
purebeam@clinicon.com
www.clinicon.com



SureLase™

Cost effective, advanced "PureBeam™" Technology CO₂ Laser System with precise delivery of TEM₀₀ mode laser energy through the durable "SureGuide™" fiber cable, sterilizable SureTouch™ universal handpiece and low cost disposable, malleable SureProbe™ cannulae and flexible "SureLight™" fibers.

© Copyright 2015 Clinicon Corporation. All rights reserved.
Caution: Federal law restricts this device to sale by or on the order of a physician.
Several patents pending.